

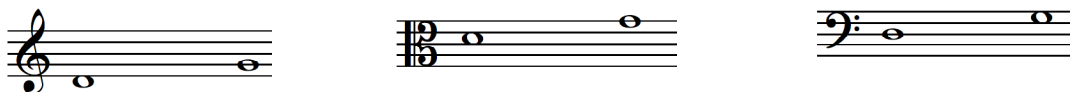
How to use Note Trainer

1. Log on to **www.musictheory.net**
2. From the “**Trainers**” drop down list, select “**Note Trainer**”
3. To set the Trainer for your instrument, click on **Settings**
4. Click on the clef for your instrument
***Make sure that all other clefs are disabled.**

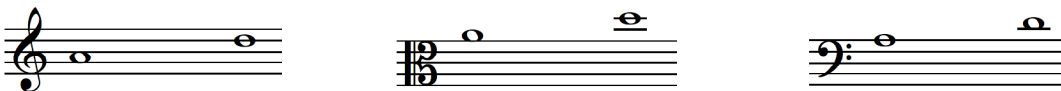
Treble Clef for Violins
Alto Clef for Violas
Bass Clef for Cellos

5. You can click and drag the notes on the staff up and down to select the range of notes that will be displayed in the Trainer.

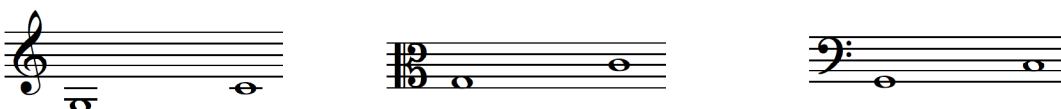
For D String Notes Only:



For A Strings Notes Only:



For G String Notes Only:



6. Click on **Settings** again to return to the Note Trainer.
7. To use the Note Trainer you can either click on the letters at the bottom of the screen or type the letters on your keyboard for the note that you think is displayed. If you are correct, a new note will be displayed. If your choice was incorrect, the correct answer will be displayed in red.